



**ALASKA DIVISION OF HOMELAND SECURITY &  
EMERGENCY MANAGEMENT**



**SITUATION REPORT 19-325 • NOV 21ST, 2019**

Toll Free 1.800.478.2337

Anchorage Area 907.428.7000

SEOC 907.428.7100

<p><b><u>SEOC Preparedness Level</u></b> Level 1 – Routine Operations</p>	<p><a href="http://ready.alaska.gov">http://ready.alaska.gov</a></p>	<p><b><u>National Terrorism Advisory System:</u></b> View this site for the latest NTAS bulletin: <a href="#">You can read the new NTAS Bulletin here.</a></p>
<p><b><u>Maritime Security (MARSEC)</u></b> Level:1-Minimum Appropriate Security Measures</p>	<p><b><u>WHO Post Pandemic:</u></b> Disease activity at seasonal levels.</p>	<p><b><u>Alaska Military Installation Force Protection Level:</u></b> FPCON Bravo</p>

(Significant changes from previous situation reports are in red.)

**THREAT LEVEL CHANGES:** SEOC LEVEL 1 – ROUTINE OPERATIONS

**Significant Issues:**

None at this time.

**Travel Alerts and Conditions**

Very difficult driving conditions are reported on the Dalton Highway from mile post 381 to 414 for drifting snow and ice on roadways.

For current driving conditions dial 511 or link to <http://511.alaska.gov/>

**Recent Earthquakes**

USGS Earthquake Information: <http://earthquake.usgs.gov/>

National Tsunami Warning Center: <http://ntwc.arh.noaa.gov/>

**Alaska Volcanoes**

**Cleveland** Alert Level: WATCH and Aviation Color Code: Yellow

**Shishaldin** Alert Level: WATCH and Aviation Color Code: Orange

**Semisopchnoi** Alert Level: Advisory and Aviation Color Code: Yellow

For Alaska Volcano updates, go to: <https://www.avo.alaska.edu/>

**Air Quality Index (AQI) Advisories**

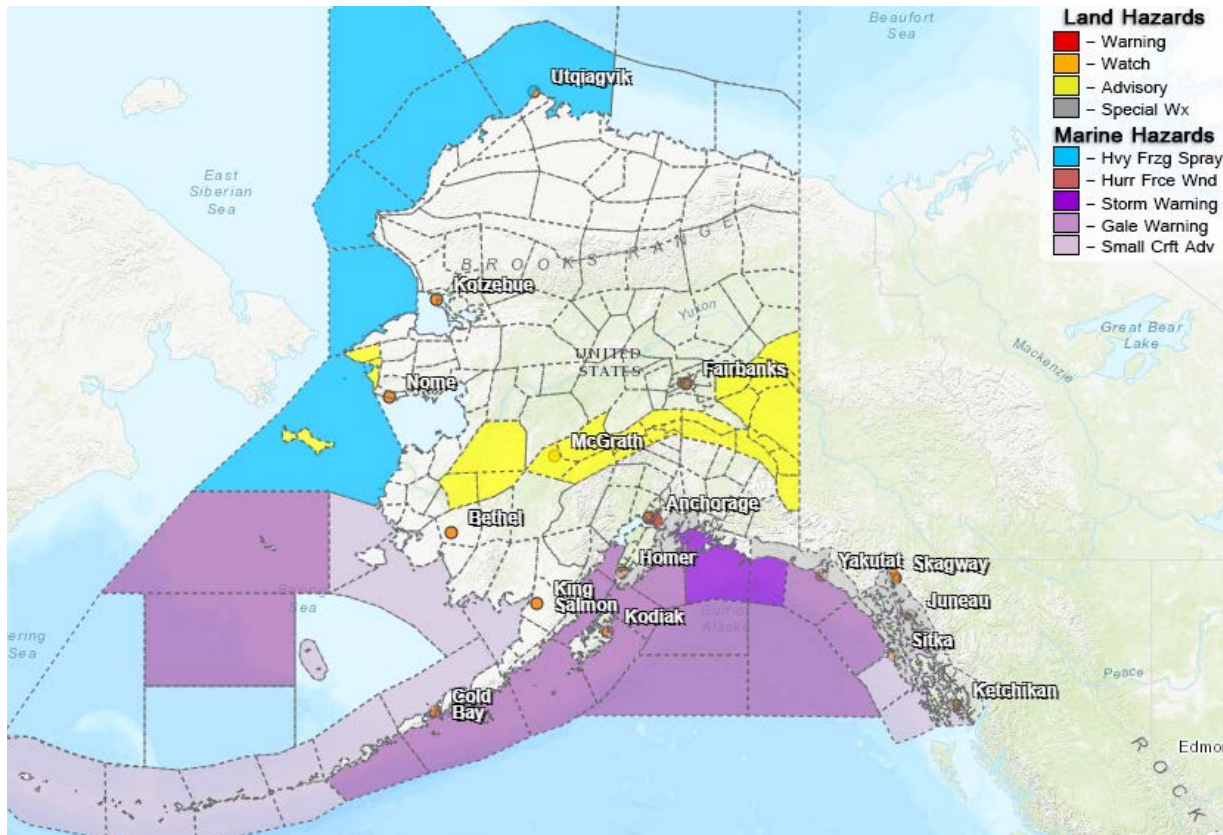
No active advisories are currently in effect.

For the most up to date Air Quality Index Advisories:  
<http://dec.alaska.gov/Applications/Air/airtoolsweb/Home/Index>

## **State of Alaska Department of Health and Social Services (DHSS)**

The Alaska DHSS website is located at <http://dhss.alaska.gov/Pages/default.aspx>

### **Significant Weather:**



A High Wind Warning has been issued to Anchorage and the Turnagain arm for Southeast winds 25-45 mph with gusts up to 75 mph through 2100 this evening.

A Wind Advisory is in effect through Friday noon for the Eastern Alaska Range for South winds 25-35 mph with gusts up to 55 mph.

A Wind Advisory is in effect through Friday noon for Denali for Southeast winds 25-40 mph with gusts up to 65 mph.

A Special Weather Statement has been issued for Heavy Rainfall possible Thursday into Friday for Seward.

A Special Weather Statement for Heavy Rain with High River Levels has been issued for Juneau and surrounding areas through 1700 Friday evening.

Winter Weather Advisory is in effect until 6 am Friday for snow and freezing rain in the Upper Kuskokwim Valley.

Winter Weather Advisory is in effect until 6 pm Friday for snow and freezing rain in the Lower Yukon Valley.

A Special Weather Statement has been issued for St Lawrence Island and Bering Strait Coast through Saturday for Strong Winds gusting to 55 mph and Heavy Freezing Spray.

A High Surf Advisory is in effect until 1800 Saturday for the North Coast of St Lawrence Island.

A Winter Storm Watch is in effect Friday afternoon for the South Klondike Highway for heavy snow with up to 8 inches possible.

For the most current weather Watches / Warnings / Advisories go to: <http://www.weather.gov/arh/>

### **Spills of Oil and Hazardous Substances**

The ADEC Spill Prevention and Response page is located at

<http://dec.alaska.gov/spar/ppr/spill-information/response/>

### **Alaska Cyber Security Information**

State Employees may sign up for cyber security notifications and alerts at

<https://oit.alaska.gov/Security>

**The Next Situation Report:** will be 21 November 2019 at 8:00 am. A significant change in the situation or the threat level will prompt an interim report.

This report is posted on the internet at <https://ready.alaska.gov/sitrep>. To register for email distribution, go to <http://list.state.ak.us/mailman/listinfo/dhsem.situation.report>. Direct questions regarding this report to the SEOC at 907-428-7100 or [seoc@alaska.gov](mailto:seoc@alaska.gov).